

# EASY GUIDE

## YOU CAN DO THIS!

Everything you need to get started on your road to financial freedom and work independence is in this guide!

### ESTIMATE YOUR INCOME AT SYMMETRY

FORMULA	EXAMPLE	INPUT YOUR INFO
W2 * 2 = Gross Income	(\$50,000) * 2 = \$100,000	(_____) * 2 = _____
(Rent)	(\$19,000)	(_____)
(Other Expenses)	(\$5,000)	(\$5,000 estimate)
= Total	= \$76,000	= _____

Example: If last year's pre-tax income was \$50,000, it could be approximately \$76,000 at Symmetry... this excludes additional income from retail sales!

### SPEAK WITH US AND LEARN MORE

**Eanna Ponce**

301-228-0130 option 50

[leasing@symmetrystalonstudios.com](mailto:leasing@symmetrystalonstudios.com)



# EASY GUIDE

## ONCE YOU'VE SIGNED A LEASE WITH SYMMETRY, YOU'LL WANT TO:

### CALL AN ACCOUNTANT + LEGALLY CREATE YOUR BUSINESS

#### **Pardis Kimia**

Synergy CPAs  
301-718-4767

Ask him to:

- Set up your LLC
- Apply for a Tax ID number

### OPEN A BANK ACCOUNT

#### **MONTGOMERY COUNTY**

##### **Jared Chambers**

Financial Center Manager  
Bank of America  
12099 Rockville Pike  
Rockville, MD 20852  
240-514-0511

#### **ANNAPOLIS**

##### **Renee Fusick**

Bank of America  
Annapolis Mall  
Location  
443-837-1760

#### **VIENNA**

##### **Douglas Carbajal**

Business Solutions Advisor  
Bank of America  
235 Maple Avenue  
Vienna, VA 22180  
703-319-2670

### GET INSURANCE

#### **Todd Balderson**

Todd@toddbalderson.com  
301-874-0772

On your policy, list us as “additional insured”

- Ask your Site Manager for specific details

## BEFORE YOUR START DATE:

### ORDER RETAIL + COLOR LINE + BACKBAR + SUPPLIES

Make sure to ask about FREE back bar products and retail startup kits!

#### Capital Hair Products

202-780-9196

[order@capitalhairproducts.com](mailto:order@capitalhairproducts.com)

#### The Cutter's Edge, Lee Dechter

703-527-0766

[cuttersedgeonline.com](http://cuttersedgeonline.com)

Symmetry tenants receive **20% OFF WELLA** products at Capital Hair Products.

### ORDER BUSINESS CARDS

Get Symmetry logo and design elements from the Marketing team:

[marketing@symmetrystalonstudios.com](mailto:marketing@symmetrystalonstudios.com)

### PREPARE YOUR WEBSITE PROFILE

Visit [symmetrystalonstudios.com](http://symmetrystalonstudios.com) to see profile & photo examples.

Email the Marketing Department: [marketing@symmetrystalonstudios.com](mailto:marketing@symmetrystalonstudios.com)

Have a digital headshot ready to share.

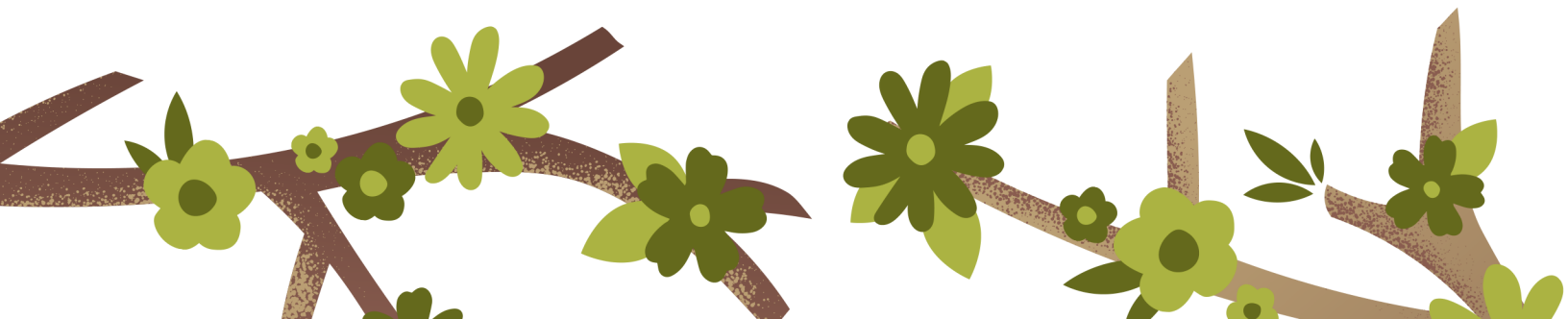
*Pro tip: take it against a plain background for best results.*

### SOLICIT SOCIAL MEDIA LIKES AND REVIEWS

Follow [@symmetrystalonstudios](https://www.instagram.com/symmetrystalonstudios) on Instagram and Facebook!

Ask all of your clients and friends to as well.

Once you have opened your Symmetry studio, ask your clients to review YOU and Symmetry Salon Studios on Yelp, Google Maps and Facebook.



## ALMOST THERE!

### HAVE YOU COMPLETED EVERYTHING?

Before Opening:

	Sign lease
	Accountant
	Bank account
	Insurance
	Credit Card processing
	Retail product
	Color lines
	Back bar
	Supplies
	Business cards
	Website profile

After Opening:

	Social Media
	Ask for reviews

### STILL HAVE QUESTIONS? WE CAN HELP!

Visit our website at [symmetrystalonstudios.com](https://symmetrystalonstudios.com),  
or call us to learn more.

**Eanna Ponce**

301-228-0130 option 50

[leasing@symmetrystalonstudios.com](mailto:leasing@symmetrystalonstudios.com)

